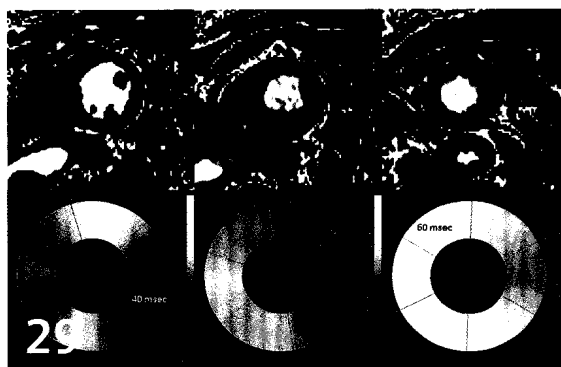
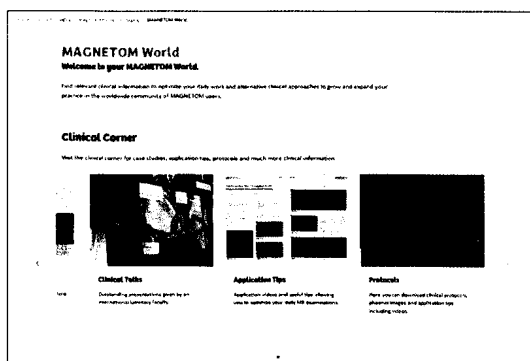


Contents



Reference normal values for myocardial T1 and T2 maps



Learn from the experience of other MAGNETOM users

The MAGNETOM World is the community of Siemens Healthineers MR users worldwide, providing you with relevant clinical information. Here you will find application tips and protocols to optimize your daily work. Lectures and presentations from experts in the field will allow you to be exposed to new ideas and alternative clinical approaches.

Put the advantages of the MAGNETOM World to work for you!

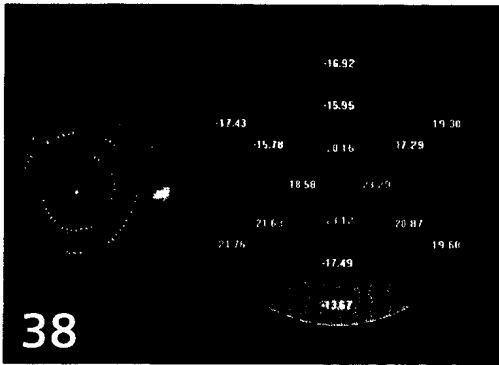
[siemens.com/magnetom-world](https://www.siemens.com/magnetom-world)

Editorial Comment

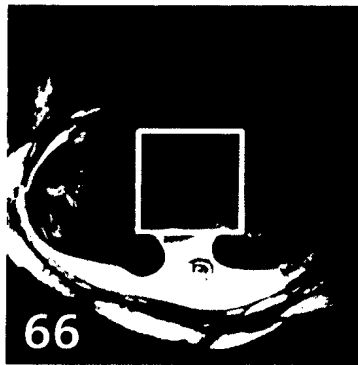
- 4 *James C. Carr, Northwestern University, Feinberg School of Medicine, Chicago, IL, USA*

Cardiovascular Imaging

- 8 **Adding Value to CMRI with MAGNETOM Sola's BioMatrix Technology**
Johan Dehem, VZW Jan Yperman, Ypres, Belgium
- 14 **Impact of Compressed Sensing Cardiac Cine in a Busy Clinical Practice**
Jérôme Garot, Gilles Auvray, Institut Cardiovasculaire Paris Sud, Massy, France
- 18 **Motion-corrected Whole-heart Simultaneous Cardiac MR/PET Imaging: Initial Clinical Experience**
Camila Munoz, et al., King's College London, United Kingdom
- 29 **Reference Normal Values for Myocardial T1 and T2 Maps with the MAGNETOM Vida 3T System and Case Examples from Clinical Practice**
Guillem Pons-Lladó, Clínica Corachán, Barcelona, Spain



38 Cardiotoxicity in cancer therapy

66 Fetal cardiac MRI¹

72 3D Localization for cardiac views

- 34 MINOCA. Myocardial Infarction with Non-Obstructive Coronary Arteries**
Edyta Blaszczyk, Jeanette Schulz-Menger, University Medicine Berlin, Charité Campus Buch, HELIOS Clinics Berlin Buch, Germany
- 38 Cardiovascular Magnetic Resonance – Cardiotoxicity in Cancer Therapy**
Bernd J. Wintersperger, et al., University Health Network, Toronto, Canada
- 43 CMR and Cardiotoxicity. A Case-based Overview**
Fabian Muehlberg, Jeanette Schulz-Menger, University Medicine Berlin, Charité Campus Buch, HELIOS Clinics Berlin Buch, Germany
- 45 Unusual Atrial Myxoma with Neovascularization Associated with Fistula to Right Atrium**
Pairoj Charanukulchai, Kanokvalee Ponkanist, Chulalongkorn University, Bangkok, Thailand
- 48 Clinical Usefulness of 4D Flow² in Adult Cardiovascular MRI**
Stephanie Funk, Jeanette Schulz-Menger, University Medicine Berlin, Charité Campus Buch, HELIOS Clinics Berlin Buch, Germany

Pediatric Imaging

- 52 4-Dimensional Phase Contrast Imaging² in Congenital Heart Disease: How we do it¹**
Timothy C. Slesnick, et al., Emory University School of Medicine, Atlanta, GA, USA
- 66 Small Structures, Big Challenges: Fetal Cardiac Magnetic Resonance Imaging¹**
Matthias Stuber, et al., University of Lausanne, Lausanne, Switzerland

How-I-do-it

- 72 3D Localization for Cardiac Views: Saving Time While Increasing Accuracy**
Julian Gan, Siemens Healthineers, Singapore
- 78 The Various Definitions of TR**
Gary R. McNeal, Siemens Healthineers, Chicago, IL, USA

Meet Siemens Healthineers

- 87 Introducing Michaela Schmidt and Carmel Hayes, Development of cardiovascular applications, Siemens Healthineers, Erlangen, Germany**