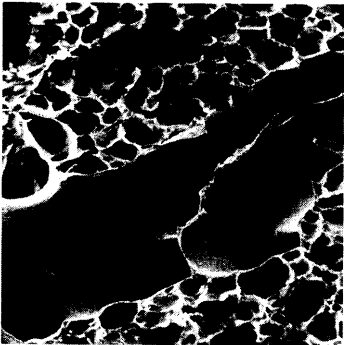


**International Advisory Committee**

Prof. K. E. Juhani Airaksinen, Turku, Finland  
 Prof. Anthony Bayes de Luna,  
 Barcelona, Spain  
 Prof. Hubert E. Blum, Freiburg, Germany  
 Prof. Walter E. Haefeli, Heidelberg, Germany  
 Prof. Nino Kuenzli, Barcelona, Spain  
 Prof. René Lutter, Amsterdam,  
 The Netherlands  
 Prof. Claude Martin, Marseille, France  
 Prof. Josef Patsch, Innsbruck, Austria  
 Prof. Luigi Tavazzi, Pavia, Italy

Scanning electron micrograph of the lung of a Syrian golden hamster. Prior to fixation of the lung, the hamster inhaled an aerosol of polystyrol spheres. The picture shows the alveolar region (gas exchange parenchyma) which is diagonally crossed by an airway (upper structure) with deposited particles and a pulmonary artery (lower structure) closely following the airway. (Peter Gehr, Institute of Anatomy, University of Berne)

**Editorial Board**

Prof. Jean-Michel Dayer, Geneva  
 Prof. Paul Erne, Lucerne  
 Prof. Peter Gehr, Berne  
 Prof. André P. Perruchoud, Basel  
 Prof. Andreas Schaffner, Zurich (ed. in chief)  
 Prof. Werner Straub, Berne (senior editor)  
 Prof. Ludwig von Segesser, Lausanne

Swiss Medical Weekly  
 Volume 138 · No 3/4  
 January 26, 2008

**Editorial**

*Jean-Pierre Zellweger*

Latent tuberculosis: which test in which situation? 31

**Original articles**

*Daniel Gredig, Sibylle Nideröst, Martin Rickenbach*

Parents living with HIV in a high-income country:  
 do patients need specific support? 38

*Marinko Dobec, Walter Bossart, Franz Kaeppli, Juerg Mueller-Schoop*

Serology and serum DNA detection in shingles 47

**Short communication**

*Georgios K. Efthimiadis, Georgios Giannakoulas, Helen P. Hassapopoulou,  
 Haralambos I. Karvounis, Dimitrios D. Tsikaderis, Ioannis H. Styliadis,  
 Georgios E. Parcharidis*

Prognostic significance of right ventricular diastolic function  
 in thalassaemia major 52